

Life

TEL
HAI

The Magazine of Tel Hai Retirement Community | Spring 2024

COMING SOON
Woods Edge
Cottage
Expansion
pg. 4



*The Advantages of
Cottage Living*



Tel Hai Life Magazine
Spring 2024

EDITOR
Jolene Weaver
Director of Communications

DESIGN
Anstey Hodge Advertising Group,
Roanoke, VA

PHOTOGRAPHY
The Premise Studio, Lancaster, PA

PRINTER
DavCo Advertising Inc., Kinzers, PA

To opt out of receiving *Tel Hai Life* or for address changes, please direct to Tel Hai Retirement Community, Attn: Marketing, P.O. Box 190, Honey Brook, PA 19344, call (484) 796-4262 or e-mail info@TelHai.org

Tel Hai Life is published by Tel Hai Retirement Community. Tel Hai Retirement Community is an equal opportunity employer. The views and opinions expressed in *Tel Hai Life* do not necessarily represent the official policies of Tel Hai Retirement Community, nor are they always the opinions of the editor. Additionally, corresponding comments are the personal opinions of the original authors and do not represent the official policies of Tel Hai Retirement Community. Tel Hai Retirement Community complies with applicable Federal civil rights laws and does not discriminate on the basis of race, color, national origin, religion, sex (including gender identity and sexual orientation), familial status, and disability. Tel Hai Retirement Community does not exclude people or treat them differently because of race, color, national origin, religion, sex (including gender identity and sexual orientation), familial status, and disability in certain health programs or activities.

The Advantages of Cottage Living

Comfortable and stylish maintenance-free homes.

Nestled among the mature, tree-lined streets of our hillside campus, Tel Hai's unique and distinctive neighborhoods are home to 185 charming cottages where residents are discovering the joy of inspired living within a fun, active and engaging community.

Ranging in size from 936 sq. ft. to 1,920 sq. ft., our expansive array of cottage variations in Maple Knoll, Cedar Ridge and Woods Edge are clustered into an idyllic drive with amazing views of surrounding Amish farmland. With a classic combination of brick, stucco and stone veneer exterior finishes, our charming cottages offer a unique visual balance and blend seamlessly together with the evergreen trees and seasonal foliage surrounding them.

Our diverse square footage range meets the needs of many who are seeking to rightsize, yet not compromise on room to entertain or enjoy hobbies. All cottages feature a first-floor primary bedroom, while many have "bonus" spaces like sunrooms, dens, second bedrooms and basements. All cottages include ample extra storage spaces and a one- or two-car oversized garage.

Just outside your private retreat, all cottages are within walking distance to dynamic amenities, support services, socialization opportunities and dining venues.



CONTENTS

- 1 The Advantages of Cottage Living
- 4 Woods Edge Cottage Expansion
- 6 The Moving Resources Program
- 8 Online Explorations
- 9 Life on the Hill
- 12 Art & Worship

Affordability Today and Tomorrow

At Tel Hai, cottage residents find peace of mind in knowing they are in a home and community they can afford—and can continue to afford—should future care be required. Tel Hai is a fee-for-service structured community, which provides flexibility regarding your future care options. A fee-for-service contract includes all the benefits of residential living and amenities, but features a lower monthly fee and lower entry fee compared to other continuing care contracts.

There is comfort in knowing that at Tel Hai, you'll have a predictable and affordable monthly fee. For each cottage household, a monthly service fee is paid, covering a wide range of services such as water and sewer, trash removal, cottage maintenance, lawn and shrubbery care and snow removal. Also included is access to all campus amenities like life enrichment activities, social programming, fitness facilities, exercise classes, etc. Don't forget, your monthly fee also includes "Flexible Dining Dollars," which is a built-in benefit that can be used at any on-campus Culinary Services venue.



Preventive and Ongoing Cottage Maintenance

The Tel Hai lifestyle is built on the foundation of freedom—driven by independence, convenience, and choice. With cottage living, it's freedom from the physical burdens of home ownership, like ongoing maintenance worries, yardwork and a never-ending "to do" list.

With your current home, you may be saddled with a variety of unknowns, such as costly repairs like appliance replacements or patching a leaking roof. Not at Tel Hai—that's our job.

Supported by an on-staff Facilities and Renovations team, cottage living offers the assurance that we have you covered with our extensive preventive and ongoing maintenance of your home. From changing a far-reaching ceiling light bulb to mulching flower beds, or replacing a leaking water heater to unclogging gutters, there is no additional cost. It's that simple.

Customization and Craftsmanship

Your home reflects you, your style, and your taste. Whether it's new construction (see pages 4 and 5 on our new Woods Edge Cottage expansion) or the renovation of an existing cottage, our on-campus Custom Design Center offers endless combinations to make your house feel like a home! Within the design center, Karen Cochran (Moving Resources Manager), walks you through the customization and selection process where you can touch, feel and compare your options. From trim color to cabinet pulls, it's your choice.

Also, many of our cottage homes include signature touches like gas fireplaces and custom millwork, showcasing unparalleled craftsmanship. When paired with high-quality products like luxury vinyl planking, durable quartz countertops and Wi-Fi-enabled space-saving appliances, cottages feel modern yet mature in our well-established neighborhoods.



Space to Serve

Woods Edge Cottage Resident Terry Feisler

Since moving to Tel Hai with her husband Brad in 2019, resident Terry Feisler has not only continued—but expanded—her passion of cooking for individuals experiencing food insecurity in the greater Honey Brook area.

Enjoying the flexibility of retirement community living in their 1,408-sq.-ft. Woods Edge Cottage, Terry puts her expansive custom kitchen to good use through a meal-preparation partnership with a local food pantry.

"I love to cook and know that every cent of what I'm doing and giving

is going to someone who is hungry," shared Terry. "It's humbling and gratifying that I can continue to serve others."

Previously a food pantry volunteer in their former community of Sadsburyville, Terry is no stranger to a busy kitchen. "I plan everything in advance including the menu; the right balance of protein, starch and vegetable; and the container... so someone can easily reheat in a microwave," she commented.

"When we rightsized to move to Tel Hai, I knew I wanted to continue to cook and bake. I love cooking

stews, soups and hearty foods with enough to share," said Terry.

When customizing their kitchen, Terry requested the Renovations Team rotate the kitchen island, which accommodated a new, extra-wide built-in pantry to store her food processor, air fryer, pressure cooker and loads of cooking gadgets.

Paired with an oversized garage—which houses an extra upright freezer and additional cooking supply storage space—their cottage has become the perfect place to create her favorite meal, chicken pot pie!



The Anticipation Is Growing



Woods Edge
Cottages at Tel Hai
EXPANSION

It's with great excitement we share that our highly desired Woods Edge Cottage neighborhood—featuring charming, private homes—is expanding!

Beginning in 2024-2025, we plan to welcome 44 new households into our Life Plan Community. We've partnered with custom-home and building expert EG Stoltzfus on this project, and we're nearing the conclusion of the planning and final approval process.

True to its name, the Woods Edge Cottage neighborhood is positioned in the northwest corner of the campus, surrounded by year-round greenery, self-preserved woodlands, and amazing views of the Chester County countryside.

Ranging in size from 1,408 sq. ft. to 1,920 sq. ft., Woods Edge features four graciously open floor plans, signature details with cathedral ceiling, some with full basements with door access.

First-floor living options include two-bedroom floor plans featuring a large primary suite, two bathrooms, living room, dining room, fully equipped kitchen and laundry, sunroom, patio, ample storage, and personal emergency monitoring and response system.

Interested in this Woods Edge Cottage expansion? Join us at the dessert reception!

TelHai.org/expansion



Coming Soon

Join us for a Dessert Reception

Community Overview and Woods Edge Cottage Expansion Informational Session

Monday, June 17, 2 pm

Are you new to Tel Hai and interested in learning more about our community and the advantages of cottage living? Want to know more about our new Woods Edge Cottage Expansion coming soon?

Join us for a **newbies-only** informational session—led by Tracy Weaver (Residential Living Counselor)—as you explore what your future could look like at the “Hill of Life!”

Tracy will provide a great overview of our Life Plan Community and review the full range of residential accommodations, amenities, continuing care services available, and our exciting expansion plans.

Best yet, Tracy will share the benefits and importance of joining the Future Resident List and Ready-Set-Go Program.

RSVP required by June 10. To register, call Marketing at (484) 796-4262 or email info@TelHai.org

Event held in StoneCroft Commons located at 4000 Tree Line Drive, Honey Brook. We are only 3 short miles east of Route 10 off Beaver Dam Road. Follow Beaver Dam Road to the campus of Tel Hai, then turn onto Tree Line Drive and follow signs to StoneCroft. Parking is available adjacent to the entrance.



Tracy Weaver, Residential Living Counselor, loves developing relationships with future residents and their families. She'll help you navigate your senior living experience at Tel Hai, explore your options and get started on the path to residency. Tracy's a pro at explaining all things Tel Hai, like the benefits of our Life Plan Community continuum of care, amenities and lifestyle.



The Moving Resources Program

Move management made easy

Organized, convenient & achievable.

It's that simple and it's our goal... to pair you with the people, services, and resources you need to conquer your moving checklist. It can be done, and we're here to help.

Whether you've been on the fence about rightsizing to a Life Plan Community like Tel Hai, or have been mentally preparing for years, our signature Moving Resources Program is designed specifically with you in mind.

The program pairs you with essential move-related resources and services to prepare you now for the journey ahead. As a complimentary service for those enrolled in the Ready-Set-Go Program—individuals who intend to move in the near future—we provide an impressive catalogue of vetted, trusted partners and helpful resources to conquer your moving worries and fears.

As the Tel Hai-to-resident liaison, Moving Resources Manager Karen Cochran serves as a support function through the reservation, selection and move-in process. From hiring a reputable real estate agent to finding a qualified mover, Karen can lead

you in the right direction. Whether it's exploring the services of a professional organizer, stager, or auctioneer, we know those folks too and we're here to help!

Get started and gain access to the Moving Resources Program through applying for residency. It's never been easier. Visit us online where you can download, complete and remit the application to begin the residency process.

TelHai.org/residency



The Program

- Complimentary home visit including program overview, introduction to services and future needs and wants
- Access to recommended qualified realtors, movers, stagers, professional organizers, auctioneers, appraisers, etc.
- Access to recommended short-term housing providers, financial partners, lending institutions, etc.
- Relationship management with essential service providers to enable a smooth transition
- Assistance with furniture inventory/placement and ¼-inch scale drawing of floor plan
- Support and advice in appliance, flooring, cabinetry, paint, countertop and additional selection offerings within the Custom Design Center



Woods Edge Cottage Residents Wendy and Rob Quanstrom

After 30 years and watching their three adult daughters fly the coop, Wendy and Rob Quanstrom were prepared to say “goodbye” to their 1,800-sq.-ft. Holland (Bucks County) home and “hello” to a cottage at Tel Hai.

And when they say prepared, they mean prepared!

Applying for residency in August of 2020, the Quanstroms soon realized the advantages and investment in joining the Ready-Set-Go Program to prepare themselves—and their home—for an eventual sale and move to Tel Hai.

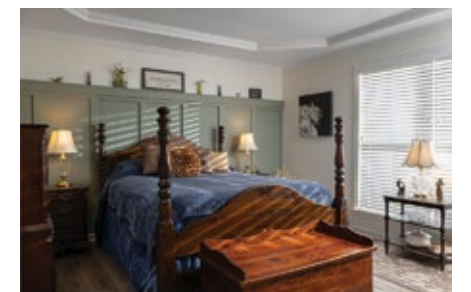
“The Moving Resources Program gave us the inspiration and spark of what we needed to do to have a successful move,” shared Rob. Until retiring and moving to Tel Hai in January of this year, they both worked full-time, with Rob as a cardiology stress lab nurse and Wendy as a dental hygienist.

“If we did it, others can too,” said Wendy. “I think people are either reactive or proactive. I’m proactive. We made the choice of ‘Yes, we’re moving,’ and then Karen told us what we needed to do to make it happen. The program kept us motivated, re-energized and focused.”

Their approach was little by little, month after month, of paring down their belongings, from basement boxes to kitchen items. Wendy said farewell to long-ago craft projects that no longer sparked joy, and Rob led on preparing the house for sale, including a needed back porch remodel. Their house sold after only six days on the market.

“My advice is for people to come to every open house, attend educational talks, listen to current residents, and prepare now with the tools you are given,” reflected Wendy.

After preparing, retiring and moving, the Quanstroms are “decompressing



and adjusting” to their new home, new community and new neighbors. “No more worrying about the sump pump when it rains or cleaning the gutters each fall,” said Rob, a budding amateur landscape photographer.

“It feels great!” said Wendy, as their summer plans shape up to hit the road and visit their children and seven grandchildren in Maine, Virginia and Western PA.

Interactive and Customizable Cottage Floor Plans

Plan Your NEW Home Today!



It's easier than ever to envision your life—and your stuff—at home at the Hill of Life.

From scaled floor plans to virtual tours, you can explore our community online before you even step foot on our beautiful 148-acre campus.

At Tel Hai, we give you the tools, tips and tricks to make planning your retirement future organized and stress-free. With our “Interactive Floor Plans,” you can “play” with the layouts of six select accommodations, including cottages and apartments ranging from 790 sq. ft. to 1,920 sq. ft.

This easy-to-use online tool allows you to quickly and easily drag and drop your furniture into your preferred floor plan. You'll know if your couches fit and if you can upgrade to a king bed *before* you move!

Best yet, you can save your floor plan so you can come back later to play more or finalize your plan prior to a move.

To get started creating your new home today, visit our website to receive access to this signature, online feature.

TelHai.org/interactive

As shared on pages 4 and 5, we're expanding our Woods Edge neighborhood with 44 additional homes planned for 2024-2025! All accommodations are featured within our Interactive Floor Plan online tool:

- The Chester – 1,920 sq. ft.
- The Lancaster – 1,733 sq. ft.
- The Berkshire – 1,582 sq. ft.
- The Delaware – 1,408 sq. ft.

* Square footage is approximate and does not include garage. Exact layouts of select homes may differ from initial architectural drawings. Not all accommodation features are available in all floor plans.

Life ON THE Hill

SPRING & SUMMER 2024

EVENTS. ENTERTAINMENT. ENGAGEMENT.

Life at Tel Hai is enriching and rewarding! Our calendars are jam-packed with life-enhancing events that will keep your mind engaged, your body energized, and your spirit lifted. We welcome you to attend any of our dynamic events, including educational lectures, entertaining concerts and enrichment opportunities. Programming brought to you by Tel Hai's resident-led Life Enrichment Committee & Performing Arts Series.

Chester County Youth Orchestra

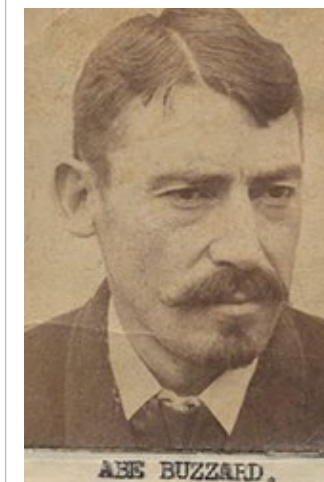
Wednesday, May 1, 7:30 PM**

The Chester County Youth Orchestra is dedicated to giving young student musicians—grades 6-12—in Southeastern Pennsylvania the chance to grow musically by performing challenging works from the standard orchestral literature as well as music from the cinema and the Broadway stage. These talented students hone their performance skills and learn a wide variety of music. As members of the CCYO, students gain experience playing music of many different composers, styles, and time periods.

Exploring the Welsh Mountain

Mondays, May 6, 13, 20, 2:15 PM**

Join lecturer Ken Sensenig for a three-part talk on the Welsh Mountain, which stretches for about 15 miles across Lancaster and Chester Counties, from New Holland to Honey Brook. These presentations will explore the geological, cultural and religious aspects of the mountain. Along the way we will encounter bandits, miners, preachers and Amish entrepreneurs along with stories about the notorious Buzzard brothers.



Silver, Wood & Ivory

Friday, May 17, 7:30 PM**

Silver, Wood & Ivory are two women, 19 flutes and recorders, a piano, a Celtic harp and a whole lot of friendship! Each piece is uniquely arranged by Cindy Wittenberg and Tracy Dietrich, and incorporates a blend of musical styles including classical, Broadway, sacred, jazz, and their own compositions. Together, throughout the past 24 years, they have produced 17 albums and continue to perform concerts in various local venues.

Visit TelHai.org/events for additional programming highlights. **QUESTIONS? Contact Judy Schweitzer, Community Life Coordinator, at jschweitzer@TelHai.org or (610) 273-9333, ext. 2154.**

The Mainliners Chorus
Thursday, June 6, 7:30 PM*

The Delaware Valley's premier men's chorus—The Mainliners—are back to perform a variety of songs in four-part a cappella style. The group's musical style includes enthusiastic renditions of sentimental ballads, snappy rhythm tunes and rousing patriotic numbers. Formed in Bryn Mawr in 1963, their musical style had its roots in the 1870s and flourished into the 1920s.

West Chester Community Band
Monday, June 10, 7:30 PM*

The West Chester Band is an all-volunteer Community Concert Band, performing in and around the area since 1986. The band has earned a fine reputation for performing a variety of audience-pleasing music. The evening's performance will include a wide variety of musical genres such as classics, show tunes, jazz pieces, marches, and contemporary arrangements.

Ben Mauger's Mission Impossible Band
Tuesday, June 18, 7:30 PM*

Mauger's newest 8-piece band—Mission Impossible—has a repertoire including Big Band swing, show tunes, and songs from the '60s and '70s. The group also plays favorites from bands like Herb Alpert & the Tijuana Brass, The Blues Brothers and Chicago. The name was picked because it's nearly impossible to find 8 musicians who know all the different styles of all this great music... but Ben found them!



CAISO Steeldrum Band

CAISO Steeldrum Band
Friday, June 28, 7:30 PM*

CAISO (pronounced ki-e-so) has been playing and entertaining together since 1979. Its seven members, all formerly with the Trinidad & Tobago Steel Band of Washington, DC, had performed previously with well-known groups in Trinidad and the West Indies. The group's varied repertoire includes popular music, jazz, rock, calypso, Latin American and original compositions.

Tim Zimmerman & The King's Brass
Tuesday, July 9, 7:30 PM**

Tim Zimmerman, Director, and The King's Brass provide innovative worship through the "best in sacred brass music." By teaming together, these Christian professionals from around the United States perform a wide variety of music including hymn classics, Handel, jazz spirituals, Christmas carols and patriotic marches. The King's Brass will lift your heart and spirit in praise.



Tim Zimmerman & The King's Brass

Pianist Jeffrey Uhlig & Soprano Jessica Lennick: Best of Broadway
Friday, July 26, 7:30 PM**

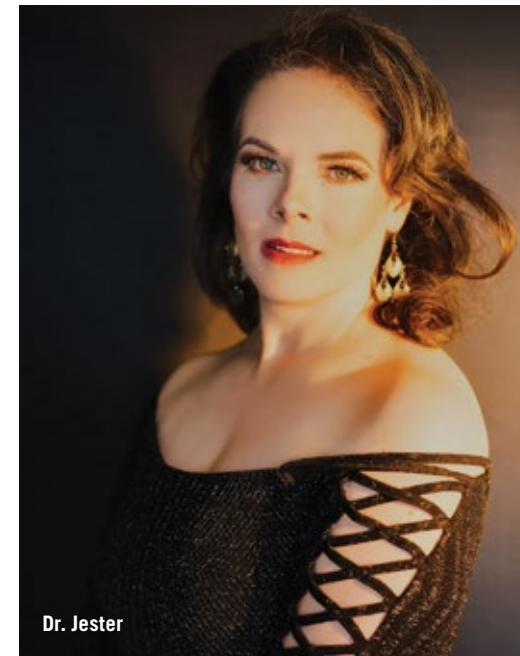
Soprano Jessica Lennick is joined by Tel Hai favorite Jeffrey Uhlig on piano. Lennick is a regular on the opera stage, singing for Washington Camerata of DC, Chesapeake Chamber Opera, and Center City Opera Theater. As an orchestral soloist, she has appeared with Riverside Symphonia, Ocean City Pops and as the soprano soloist with the Bucks County Symphony Orchestra for their Mozart Requiem.

Slingshot: Rock & Soul Revival
Friday, August 2, 7 PM*

Slingshot is a versatile and popular 4-piece band that features the music of the '60s, '70s and '80s including classic rock, soul, "one-hit wonders" and more. This summer's performance—Rock & Soul Revival—will bring back some of your favorite tunes from decades past.



Jessica Lennick



Dr. Jester

Dr. Jester and the Kings of Swing
Wednesday, August 7, 7:30 PM*

As a disciplined and creative musician, Jennifer Jester incorporates a rich musical background with many experiences in multiple genres. Her music is an extension of self that is sometimes fun, whimsical and alluring. The music lives up to Jennifer's last name, and is entertaining, playful and diverse.



Travelogue: Williamsburg Through The Seasons
Monday, August 26, 2:15 PM**

Join Tel Hai Resident Sally Weigand as you travel south to the delightful communities of southeastern Virginia. Explore Williamsburg through the seasons, visit the peak at the James River Plantations, and see the sites of both Jamestown and Yorktown.



The Tel Hai Resale Shop features a vast array of donated items available for resale to the public. Extremely affordable—and many times "one-of-a-kind"—items featured in the shop include furniture, jewelry, china, pottery, glassware, collectibles and endless treasures. Located in the Hertzler Apartment Building, all sales support residents who outlive their ability to pay for the care they require. Visit TelHai.org/resale for details.

**We're Open
9 AM – 1 PM**

- Friday, April 19
- Friday, May 17
- Friday, June 21
- Friday, July 19
- Friday, August 16

* Indicates an event at The Hillside Amenities of Tel Hai outdoor amphitheater at 1301 Tree Line Drive, Honey Brook. Bring your own lawn chair, blanket, refreshments and visor/sunglasses.

** Indicates an event at The StoneCrest Center for Worship & Performing Arts at 4000 Tree Line Drive, Honey Brook.

Artscapes IN THE GALLERY

Tel Hai boasts an impressive array of professional and in-house resident artists' work on display in the Clark Gallery, located within StoneCroft Commons. The resident-led Art Task Force welcomes the public to enjoy the gallery and discover more about the featured artist, their technique and each curated collection.



APRIL & MAY 2024 Featuring Quilts (A Tel Hai Resident Collection)

This curated display will include an assortment of hand- and machine-quilted coverlets, lap quilts and patchwork quilts by Tel Hai's very own residents. Each uniquely colorful, enjoy the variation of patterns, sizes and techniques showcased in this collection.



JUNE & JULY 2024 Featuring Christopher Lanser

The art of Christopher Lanser is a gentle blending of folk-art stylings and realism, giving a soft, nostalgic look at our world: a place filled with community, family and faith. Painting in oils and acrylics, Chris's focus is on creating beautiful and inspiring fine art images of historic and nostalgic places in the Lancaster and Chester County area. The buildings and communities depicted in his work really exist, and Christopher prides himself on combining his love of local history with painting.

Meet Chris on Thursday, July 25 from 1-3 PM in the gallery.



AUGUST & SEPTEMBER 2024 Featuring Needlework (A Tel Hai Resident Collection)

This curated display will include an assortment of needlework by Tel Hai residents, including cross-stitch, needlepoint, crochet, embroidery and knitted pieces. The countless hours invested into this painstaking collection will be a treat for the eyes that you won't want to miss!

The Clark Gallery is located at 4000 Tree Line Drive, Honey Brook. Parking is available adjacent to the entrance of StoneCroft Commons.

Worship WITH US

Rockingham Male Chorus

Saturday, April 20, 7 PM
The Rockingham Male Chorus of the Shenandoah Valley of Virginia is a group of volunteer musicians from a variety of careers who welcome the opportunity to travel and to sing the gospel of Christ. Organized in 1966, the chorus continues under the direction of David MacMillan.

With All My Heart, Corrie Ten Boom

Thursday, May 9, 7 PM
Celebrate Ascension Day with the music and dramatic presentation of *With All My Heart, Corrie Ten Boom* by Debi Irene Wahl of Act 1 Productions.

Our interdenominational services and programming welcome individuals of all faiths. All events in StoneCroft's Center for Worship & Performing Arts, located at 4000 Tree Line Drive, Honey Brook.

Destinations

Israel: Walk Through the Bible a biblical study and adventure tour

13-Day Trip: March 2025
OPEN TO THE PUBLIC

Are you ready to reignite your passion for travel, learning and culture? Join Chaplain David Hicks on a 13-day pilgrimage to Israel, March 1-13, 2025, as we visit the most significant sites from both the Old and New Testament, including Caesarea, Nazareth, Capernaum, Tel Dan, the Jordan River, the Dead Sea, the Mount of Olives and Jerusalem.

In conjunction with Educational Opportunities Tours and The Jerusalem Center for Biblical Studies, Chaplain Dave will provide an exceptional biblical and geographical perspective to the Holy Land with a time for reflection at the most significant sites.

TelHai.org/israel



For additional information and to be added to the interest list, please contact Dave directly at dhicks@TelHai.org or (610) 273-9333, ext. 2443.



Saturday,
May 4
11 AM – 3 PM

(Ready-Set-Go Program members are invited to an exclusive viewing hour from 10 AM to 11 AM.)

Unlock the potential of your future—filled with freedom and independence—and discover why “country living never looked so good!”

View distinctive residential living accommodations including apartments and our four signature *Woods Edge Cottage* floor plans featured in our new expansion.

It's the ideal day to explore your interests with a self-guided tour. View our expansive campus amenities, common areas and health services including personal care.

We're a close-knit community where the robust and rewarding lifestyle you want today... meets the assurance of continuing care services for your future.

Event registration begins at StoneCroft Commons, located at 4000 Tree Line Drive, Honey Brook. Follow Beaver Dam Road to the West Entrance of Tel Hai, then turn onto Tree Line Drive and follow signs to StoneCroft. Parking is available adjacent to the entrance.

Day in the Country
OPEN HOUSE

Saturday, May 4,
On the Campus of Tel Hai

Lunch Available For Purchase

Tel Hai
Redefining Retirement™



RSVP requested by April 26. Call Marketing at (484) 796-4262, email info@TelHai.org or register online visiting TelHai.org/DIC or scanning the QR code.



Day *in the*
Country
OPEN HOUSE

Saturday, May 4, 11 AM – 3 PM
On the Campus of Tel Hai

(Ready-Set-Go Program members are invited to an exclusive viewing hour from 10 AM to 11 AM.)

DESSERT RECEPTION

**Community Overview &
Woods Edge Cottage Expansion**

Monday, June 17, 2 PM



Join Us On Campus at the “Hill of Life”

**Country living never
looked so good**

Unlock the potential of your future—filled with freedom and independence—and discover why “country living never looked so good!”

Visit distinctive residential living accommodations including apartments and our four signature Woods Edge Cottage floor plans featured in our new expansion. Read pages 4 & 5 in this issue for more information!

You won’t want to miss our largest and most popular annual open house event!

RSVP requested by April 26. Call Marketing at **(484) 796-4262**, email info@TelHai.org or register online visiting TelHai.org/DIC.

Are you new to Tel Hai and interested in learning more about our community and the advantages of cottage living? Join us for a newbies-only informational session—led by Tracy Weaver (Residential Living Counselor)—as you explore what your future could look like at the “Hill of Life!”

Tracy will provide a great overview of our Life Plan Community and share the benefits of joining the Future Resident List and Ready-Set-Go Program.

RSVP required by June 10. Call Marketing at **(484) 796-4262**, or email info@TelHai.org to register.



**A TASTE of
Tel Hai**

**“Taste of Tel Hai”
Luncheons**

Join us for “A Taste of Tel Hai” event to learn more about the Tel Hai lifestyle. In addition to a delicious, complimentary lunch and presentation, you’ll learn about the residential living options at our community. Each luncheon begins at 11 AM.

Thursday, June 20
RSVP by June 13

Tuesday, July 16
RSVP by July 9

Tuesday, August 20
RSVP by August 13

**Seating is limited.
RSVP required at:
TelHai.org/TasteofTelHai**