

Life

TEL
HAI

The Magazine of Tel Hai Retirement Community | Spring 2022

New & Improved

**THE CUSTOM
DESIGN CENTER**

pg. 6

**LIFE PLAN
COMMUNITY**

**vs. 55+
COMMUNITY**



CONTENTS

- 1 Life Plan Community vs. 55+ Community
- 4 Living with a Dementia Diagnosis
- 6 The Custom Design Center
- 8 Online Explorations
- 10 Life on the Hill
- 12 Artscapes and Landscapes



Tel Hai Life Magazine
SPRING 2022

EDITOR

Jolene Weaver
Director of Communications

DESIGN

Anstey Hodge Advertising Group,
Roanoke, VA

PHOTOGRAPHY

The Premise Studio, Lancaster, PA

PRINTER

Progress Printing, Lynchburg, VA

To opt out of receiving *Tel Hai Life* or for address changes, please direct to Tel Hai Retirement Community, Attn: Marketing, P.O. Box 190, Honey Brook, PA 19344, call (484) 796-4262 or e-mail info@telhai.org

Tel Hai Life is published by Tel Hai Retirement Community. Tel Hai Retirement Community is an equal opportunity employer. The views and opinions expressed in *Tel Hai Life* do not necessarily represent the official policies of Tel Hai Retirement Community, nor are they always the opinions of the editor. Additionally, corresponding comments are the personal opinions of the original authors and do not represent the official policies of Tel Hai Retirement Community. Tel Hai Retirement Community complies with applicable Federal civil rights laws and does not discriminate on the basis of race, color, national origin, age, disability, or sex. Tel Hai Retirement Community does not exclude people or treat them differently because of race, color, national origin, age, disability, or sex in certain health programs or activities.



PLANNING NOW FOR A SUCCESSFUL TOMORROW

Considering Tel Hai as your home is about considering your future. Consideration toward what you value, what you want to avoid, what you really want.

But maybe you're considering a 55+ community or just staying in your current home. Neither can provide the assurance of quality care, financial security, and amenities of a retirement community.

Perhaps it was a lifelong friend, old neighbor, or family member who recently moved into a 55+ community. They unloaded their aging, bigger home that no longer fits their lifestyle. They don't have to mow or shovel snow, and are excited for their affordable and "maintenance free" future. Sounds great, right?

Fast-forward ten years—the roof needs replacing and the water heater broke, flooding two rooms. Property taxes have increased twice since they lived there. Now they're worried about future care needs. She's had recent falls and is unsteady on her feet. He's experiencing moderate memory loss and overall mental decline. Now what do they do?

Let's explore a better option...
Tel Hai Retirement Community.

The advantages of a retirement community like Tel Hai—often called a Life Plan Community or continuing care retirement community—are threefold.

Continuing Care

Unlike those living in a 55+ community, you have priority access to on-campus continuing care services. This includes a variety of services that you may one day need, including home care, personal care, memory support, skilled nursing care, and short-term rehab and outpatient therapy services. Best yet, as a fee-for-service community, you only pay for continuing care services if and when you need them. No need to move (yet again) to another community, and spouses can remain together longer.

Financial Security

Residents of Tel Hai pay a one-time entrance fee and a predictable monthly service fee. Gone are the days of costly home repairs, worries of increasing real estate taxes and general maintenance responsibilities. We do it all... from appliance replacements to changing lightbulbs. It's a reduction in overall financial risk as you age. Residents know they can afford to live in a retirement community now—and well into the future.

Lifestyle & Amenities

Our worry-free lifestyle allows residents to truly embrace the Redefining Retirement™ concept... the heart of Tel Hai. Life at Tel Hai is centered on a community of people with shared interests, passions and talents! It's a community filled with an array of unmatched amenities, interest groups, and dynamic programming. From lectures to line dancing, there are endless ways to spend your days doing what you want, when you want.

Your Future, Your Choice	Tel Hai Retirement Community	55+ Community
Priority access to the onsite continuum of care services including personal care, memory support, skilled nursing care, and short-term rehab and outpatient therapy services	✔	✗
Care provided on the same campus as a spouse, in a familiar environment by people you know and trust	✔	✗
An on-staff Social Services Team, Admissions Team and Care Coordinators to support changing care needs	✔	✗
Predictable monthly and yearly expenses; financial security in knowing you can afford your lifestyle as you age	✔	✗
Indoor & outdoor amenities including two community centers, two pools, spa, outdoor amphitheater, wellness, and arts and entertainment spaces (psst... can't forget the movie theater, train room and conservatory!)	✔	✗
Four on-campus culinary venues, general store, private catering, dining spaces and on-staff nutritionist	✔	✗



Betsy Kearney, Tel Hai Resident



For Betsy Kearney, moving to Tel Hai “was just a smart move.” Joining the community in 2017, Betsy’s 1,062 sq. ft. StoneCroft apartment was the perfect match for her lifestyle, finances and retirement dreams.

After raising her three children and retiring from management at Bell Atlantic, Betsy—then in her early 60s—moved to a Chester County 55+ community. “I enjoyed my friends and my time there, but one by one, I saw my neighbors moving to Tel Hai,” shared Betsy. “I knew I just needed to get out

before things started breaking. It just didn’t make sense to stay.”

From hefty utilities and increasing taxes to looming appliance replacements after a 12-year stay, Betsy has never looked back.

“What I enjoy the most about living at Tel Hai is the lack of worry. I don’t worry about home maintenance. I don’t worry about if I can afford to continue to live here... I know I can. It’s about peace of mind; that’s really important,” she said.

And instead of worrying, Betsy spends her time doing. As an active volunteer on campus, Betsy’s a shuttle driver, front-desk greeter, and serves on the Resident Finance Committee. And we can’t forget the Resident Volunteer Engagement Committee, where she led a “necessities” drive for Chester County’s homeless. She collected more than 2,000 items for Human Services, Inc., where she also serves as a board member.

“I moved here because I wanted to unburden my children. I live my life on my terms,” said Betsy.



Lakehouse

MEMORY SUPPORT

at Tel Hai

As a Life Plan Community, our full range of continuing care services are here for you, if and when you need them. As your care needs change, we'll meet you where you are and help you along the way. That's the advantage of living "in community" at the Hill of Life.

Tel Hai's capacity for care expanded in January with the opening of our new Lakehouse Memory Support neighborhood, aimed to support individuals with a dementia diagnosis.

We understand that with dementia, the care needs of a loved one can be complex and

difficult to manage. This often results in caregiver fatigue for a spouse and family members.

At Lakehouse, we provide personalized memory support care where residents live an active and engaged life in a safe and intimate homelike environment. With a dementia-trained clinical team providing 24-hour person-centered care in a secure space, residents are experiencing supportive, dignified living.

They enjoy a robust nutrition and holistic wellness program that's based on their individual



Built-in memory boxes assist residents in finding their rooms.

choices, cognitive abilities and interests. Stimulating activities are aimed to increase movement and fellowship among their neighbors and team members.

And when it's time for relaxation and rest, environmental features lead them back to their spacious rooms for private, quiet time. To assist in wayfinding, their room is familiar and identifiable by glancing at their favorite keepsakes—tucked away in a "memory box" next to their hallway door.

Meet Jenn

Lakeview Personal Care and Lakehouse Memory Support Admissions Coordinator

With more than 25 years in the therapy and social services field, Jenn Goossen—Admissions Coordinator for Lakeview and Lakehouse—prides herself on assisting families and loved ones in navigating the continuum-of-care process.

"I love helping families decide the best fit for their aging loved one. I help them transition to a new home with people who will passionately care for them and enhance their quality of life at Lakeview and Lakehouse. It's about finding the right care at the right time," shared Jenn.

Are you in need of Memory Support for a loved one? Thinking of exploring Personal Care options? Contact Jenn Goossen today at (610) 273-9333, ext. 2446, email info@telhai.org, or learn more at telhai.org/Lakehouse



With an associate's degree in Physical Therapy and a bachelor's degree in Social Work, Jenn spent the first part of her professional career as a physical therapist assistant in hospitals, acute settings, and long-term care providers.

Jenn is the proud mother of two high-school boys and resides in West Chester with her husband and sons.



The Custom Design Center



Karen Cochran, Moving Resources Manager

New, improved, and oh-so-fun!

Are you ready to create the retirement home of your dreams? Maybe it's the spacious custom closet you've always wanted or the functional yet reachable kitchen cabinets with plenty of lighting.

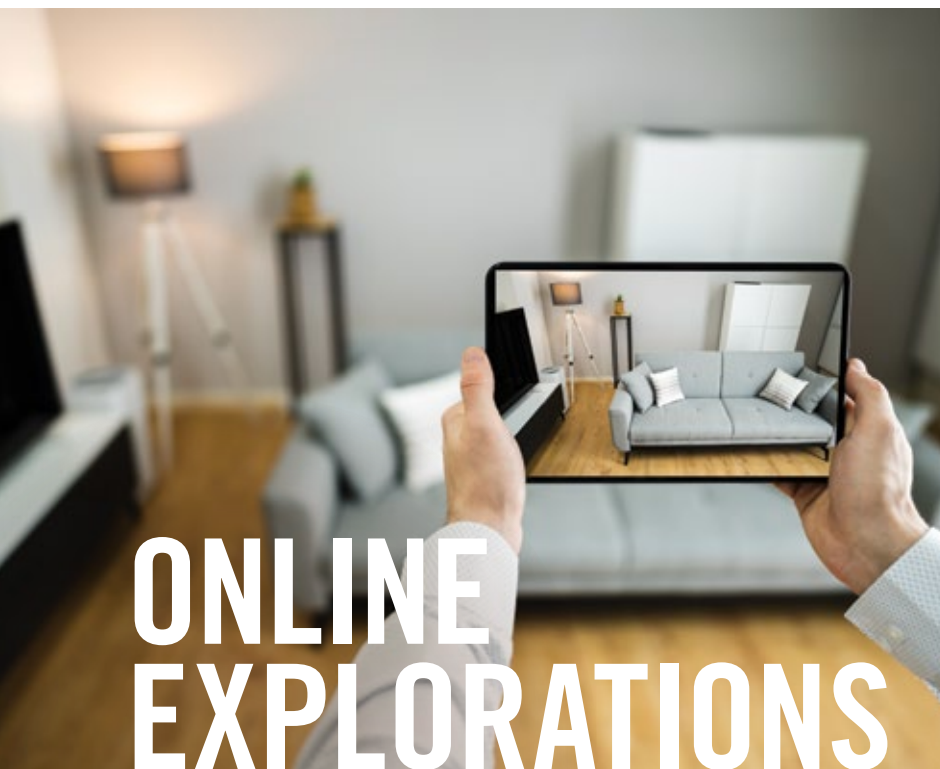
Our on-campus Custom Design Center—unveiled in February—provides future residents the opportunity to customize and personalize their new home to their preference *and* their budget.

Conveniently located in StoneCrest Commons, the new Custom Design Center showcases it all, from colors and cabinets to flooring and fixtures. With such a wide variety of high-quality products to enhance the style and appearance of your future home, the combinations are endless.

As an extension of our Moving Resources Program, the Custom Design Center is for households that have joined our Future Resident List and have committed to a future accommodation at the Hill of Life.

Karen Cochran, Moving Resources Manager, is there to help you through the selection process where you can touch, feel and compare available selections. And with a personal, complimentary visit to your current home to plan furniture arrangement options, Karen will ensure your new home reflects your style and taste.

Access to our Custom Design Center is just another advantage of joining the Future Resident List. Schedule a tour today. Get started at telhai.org/visit



ONLINE EXPLORATIONS

Discover your future home today!

We're a community like no other: inviting spaces, outstanding amenities and wonderful neighbors.

And with our expansive online library of virtual tours—including 12 cottages and apartments—you can experience a preview of the Tel Hai campus and get a sneak peek of the Hill of Life.

From the comfort of your couch, it's easier than ever to discover what makes Tel Hai such a special place.

Get started now!



Step 1: Download the E-Brochure

Request our online e-brochure or a detailed mailed brochure, which includes information about the Tel Hai lifestyle, services, amenities and pricing.
telhai.org/information



Step 2: Schedule a Visit

We encourage future residents and their families to visit our community. We'll discuss what life is like at Tel Hai and tour the spaces and places that interest you.
telhai.org/visit



Step 3: Preview the Community

Prior to your visit, "go virtual" and tour the spaces and places that interest you. Our videos give you a great insight into the homes of residents who are loving life at Tel Hai!
telhai.org/virtual-tours



The Train Club

Fellowship through a shared interest of model railroading

Community life at Tel Hai is a perfect mix of unique experiences and meaningful connections. And for members of the Train Club, nothing lives out this notion more than the hours spent in fun and fellowship creating and maintaining the Train Room.

With planning commencing in early 2018 upon the opening of Brownstone—the last constructed neighborhood within StoneCrest Apartments—years of volunteer work have resulted in an expansive miniature railroad community.

Featuring extensive displays of HO, S and O-gauge tracks, delightful miniature villages surround the tracks on several tablescapes within the 813 sq. ft.

room. With the majority of trains, tracks, and scenes donated from residents and friends of the community, the cohesiveness of the room is quite impressive.

Highlights include:

- A fishing village with a boat repair shop
- Reading anthracite coal depot and oil refinery
- Antique car show, towns and storefronts of decades past
- Mountains, log cabin and river scenes with campers
- Amish farm with cattle and gardening scenes

In hosting their first "Holiday Open House" over the course of a month, the club welcomed more than 700 visitors who generated \$1,100 in donations. Toot toot!

Check future issues of *Life Magazine* for details on the Train Club's next public open house!



Life ON THE Hill

SPRING & SUMMER 2022

EVENTS. ENTERTAINMENT. ENGAGEMENT.

Life at Tel Hai is enriching and rewarding! Our calendars are jam-packed with life-enhancing events that will keep your mind engaged, your body energized, and your spirit lifted. We welcome you to attend any of our dynamic events, including educational lectures, entertaining concerts and enrichment opportunities.

Minas Quartet

Friday, May 20, 7:30 PM

StoneCroft Center for Worship and Performing Arts

One of the most sought-after Brazilian groups of its kind, Minas features Orlando Haddad and Patricia King, who are multitalented as composers, vocalists and instrumentalists. With an impressive grasp of Brazilian musical idioms, the duo has a special love of bossa nova and jazz.

New Holland Swing Band

Friday, June 10, 7:30 PM

The Hillside Amenities of Tel Hai: Outdoor Amphitheater

Led by Col. Jere Fridy (Ret., United States Air Force), The New Holland Swing Band specializes in performing classic and modern arrangements of swing music, including classics by Glen Miller and Count Basie.

Poor Man's Gambit

Tuesday, June 14, 7:30 PM

The Hillside Amenities of Tel Hai: Outdoor Amphitheater

Formed in 2015, Poor Man's Gambit is a trio of traditional artists composed of Corey Purcell, Federico Betti and Deirdre Lockman. Building on their roots as traditional Irish musicians, the trio's repertoire is influenced by the cultural and traditional music of France, Scotland, England, and America. The band completed two tours of the UK and Ireland.



Poor Man's Gambit

Vocalist Marcus Chaney

Tuesday, June 21, 7:30 PM

The Hillside Amenities of Tel Hai: Outdoor Amphitheater

Possessing a lengthy performance resume second to none, Chaney brings to life multiple genres of entertainment for an evening of fun and music. A veteran of professional theatre from Broadway to lengthy cruise ship productions, he is the quintessential song-and-dance man.



Chaney



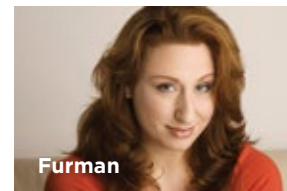
The Anna Alexander Trio

The Anna Alexander Trio

Monday, June 27, 7:30 PM

The Hillside Amenities of Tel Hai: Outdoor Amphitheater

Performing the perfect mix of jazz and modern selections, vocalist Anna Alexander is joined by Rick Reinhart on piano and Chuck Oettel on guitar. Prepare for a fantastic evening of spirited numbers as the Trio spreads the joy of music.



Furman

A Celebration of Broadway

Friday, July 8, 7:30 PM

The Hillside Amenities of Tel Hai: Outdoor Amphitheater

Vocalist Jenn Furman is joined by Tel Hai favorite Jeffrey Uhlig on piano. Trained in musical theatre at The American Musical and Dramatic Academy in New York City, Jenn's former roles include Miss Hannigan in *Annie*, Eva Peron in *Evita*, Mama Morton in *Chicago*, and Fanny Brice in *Funny Girl*. Prepare for a fantastic evening of your Broadway favorites.



Ben Mauger's
Vintage Jazz Band

Ben Mauger's Vintage Jazz Band

Tuesday, July 12, 7:30 PM

The Hillside Amenities of Tel Hai: Outdoor Amphitheater

Entertaining audiences up and down the east coast for more than 25 years, Ben and his band are back with an impressive lineup of classics from Herb Alpert and the Tijuana Brass, along with the ever-popular New Orleans jazz numbers.



Big Boy Brass

Big Boy Brass

Tuesday, July 19, 7:30 PM

The Hillside Amenities of Tel Hai: Outdoor Amphitheater

Big Boy Brass is an eight-piece brass band that plays energetic New Orleans-style brass band music, pulling inspiration from rock, pop, and funk influences. Performing at Lancaster's "Roots and Blues Fest" and the Exit Zero Jazz Fest, this group is well known in the Mid-Atlantic region.



Zahm

Salute to Classic Country

Friday, August 12, 7 PM

The Hillside Amenities of Tel Hai: Outdoor Amphitheater

If you enjoy the timeless country songs of Johnny Cash, the great cowboy ballads of Marty Robbins, and the classics of John Denver, you'll enjoy an evening with guitarist-singer Charlie Zahm and fiddler Tad Marks. They'll take you down dusty trails, over snow-capped ridges, through the Red River Valley and the Streets of Laredo.



Shop for a Cause

The Resale Shop sells a vast array of donated items at extremely affordable prices. Many "one-of-a-kind" items featured in the shop include housewares, jewelry, porcelain, pottery, and endless treasures. Perfect for first-time home buyers or to share with those in need. The Resale Shop is open to the public on the following dates from 9 AM to 1 PM:

Friday, May 20 | Friday, June 17 | Friday, July 22 | Friday, August 19

The shop is located in the Hertzler Apartment building and all sales support the Care Assurance Fund that provides financial assistance to residents who outlive their ability to pay for the care they require. The shop is open every Monday from 10 AM -12 PM to accept donations, excluding holidays, or by appointment. telhai.org/resale



In the Gallery

Tel Hai boasts an impressive array of professional and in-house resident artists' work on display in the Clark Gallery, located within StoneCroft Commons. The resident-led Art Task Force welcomes the public to enjoy the gallery and discover more about the artists, their technique and each curated collection.

JUNE AND JULY 2022

Textured Canvas, Professional Artist Rhonda Counts

Rhonda's works are instantly recognizable for their unique textures. She creates her canvases by sculpting various mediums, even perhaps finger-painting in patterns and then impressing natural elements—like leaves—into the mediums. Inspiration for this method came during her career as an Art Director for Walt Disney Imagineering. She adapted an intriguing stamping pattern technique to create natural themed landscapes into her painting process. In her studio in Fleetwood, PA, Rhonda enjoys the serenity and mindfulness in the process of creating art.

The Clark Gallery is located at 4000 Tree Line Drive, Honey Brook. Parking is available adjacent to the entrance of StoneCroft Commons.

LANDSCAPES



ALPINE ODYSSEY TOUR

featuring the Oberammergau Passion Play

August 1-9, 2022 | OPEN TO THE PUBLIC

Last call to join us for a 9-day "Alpine Odyssey Tour—Oberammergau Passion Play" in Germany and Austria. In conjunction with Educational Opportunities Tours, you'll rest well in a quaint and intimate inn located in the scenic Stubai Valley while exploring historic and beautiful country sites of Bavaria and the Tyrol region. Trip highlights include Munich, Innsbruck, Salzburg, Achensee Train, Rattenberg, Neuschwanstein and a visit to Oberammergau and the Passion Play.

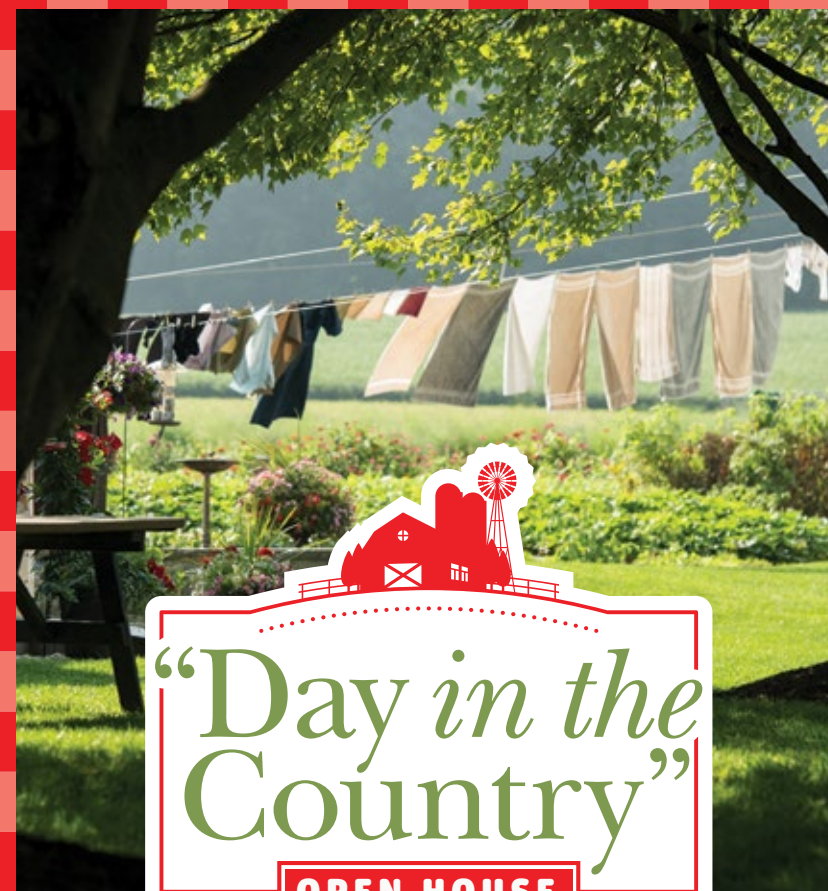
Trip cost includes guided sightseeing, Passion Play ticket, roundtrip international airfare, fuel surcharges, government taxes, administration fees, entrance fees, gratuities and program fees, buffet breakfast and dinner, deluxe motorcoaches, and first-class hotels.

telhai.org/Oberammergau

AUGUST AND SEPTEMBER 2022

Oil and Acrylic Fine Art, Professional Artist Chris Lanser

The art of Christopher Lanser is a gentle blending of folk-art stylings and realism, giving a soft, nostalgic look at our world: a place filled with community, family and faith. Painting in oils and acrylics, Christopher's focus is on creating beautiful and inspiring fine art images of historic and nostalgic places in the Lancaster and Chester County area. The buildings and communities depicted in his work really exist, and Christopher prides himself on combining his love of local history with painting.



"Day in the Country"

OPEN HOUSE



Saturday, May 7, 11 AM - 3 PM | On the Campus of Tel Hai

Set in the rolling hillside of western Chester County, our campus community is perfectly positioned between neighboring Amish farms and the quaint village of Honey Brook. It's country living at its best!

Tour our beautiful accommodations, including apartments and cottages, which are paired with expansive amenities and access to continuing care services. It's the ideal day to explore your interests with a self-guided tour.

Discover that living at Tel Hai is more affordable and flexible than ever. As a Life Plan Community, we offer a secure, worry-free lifestyle in a relaxing atmosphere that's off the beaten path. Leave the burdens of home ownership behind.

Event registration begins at StoneCroft Commons, located at 4000 Tree Line Drive, Honey Brook. Follow Beaver Dam Road to the West Entrance of Tel Hai, then turn onto Tree Line Drive and follow signs to StoneCroft. Parking is available adjacent to the entrance.

Tel Hai
Redefining Retirement™

RSVP REQUIRED BY MAY 2. Call Marketing at (484) 796-4262, email info@telhai.org or register online at telhai.org/DIC

Tel Hai Retirement Community | 1200 Tel Hai Circle | P.O. Box 190
Honey Brook, PA 19344 | telhai.org





1200 Tel Hai Circle
P.O. Box 190
Honey Brook, PA 19344
www.telhai.org

Join Us on Campus at the “Hill of Life”



Event registration begins at StoneCroft Commons, located at 4000 Tree Line Drive, Honey Brook.

RSVP required by May 2.
telhai.org/DIC

SATURDAY, MAY 7, 11 AM-3 PM

On the Campus of Tel Hai

Set in the rolling hillside of western Chester County, our campus community is perfectly positioned between neighboring Amish farms and the quaint village of Honey Brook.

Tour our beautiful accommodations, including apartments and cottages, which are paired with expansive amenities and access to continuing care services. It's the ideal day to explore your interests with a self-guided tour.



Event registration begins at Garrett Community Center, located at 1200 Tel Hai Circle, Honey Brook.

Guest capacity is limited.
RSVP required by June 21.
telhai.org/HillcrestOpenHouse

SUMMER OPEN HOUSE

featuring Hillcrest Apartments

TUESDAY, JUNE 28, 1-3 PM

Hillcrest features exceptionally designed studio, one- and two-bedroom accommodations perfect for those wanting a carefree lifestyle with access to dining venues and campus amenities. With floor plans ranging from 548 sq. ft. to 1,508 sq. ft., each home features customized quality finishes, a fully equipped kitchen and laundry, ample storage and a personal emergency monitoring and response system for safety.

“Taste of Tel Hai” Luncheons

Join us in 2022 for a “Taste of Tel Hai” luncheon to learn more about the Tel Hai lifestyle. In addition to a delicious lunch, you'll explore residential living options at our community, and hear from the residents who live here. Each luncheon begins at 11 AM in the StoneCroft Center for Worship and Performing Arts.



Tuesday, May 24	<i>RSVP by May 13</i>
Thursday, June 9	<i>RSVP by May 31</i>
Thursday, July 14	<i>RSVP by July 5</i>
Tuesday, August 16	<i>RSVP by August 8</i>
Thursday, September 22	<i>RSVP by September 13</i>

Seating is limited. RSVP required.

telhai.org/TasteofTelHai

COVID-19 PRECAUTIONS: The well-being of all individuals visiting, working and living at our community is our first priority. We follow guidelines set forth by the CDC.

