



## *Features, Services & Pricing*

Lakeview Personal Care at Tel Hai offers 24-hour, resident-centered nursing support in an inviting personal care environment by a compassionate team of expert health care professionals. A variety of programming and stimulating activities provide residents with the comfort and care they desire in an intimate setting.

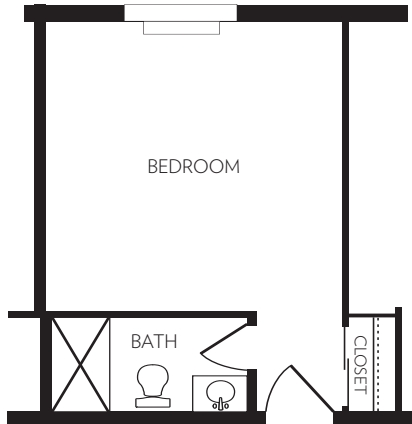
Accommodations include a variety of residences that range in size from a small private room with bath to a spacious, one-bedroom apartment. Couples or individuals seeking a secure and worry-free lifestyle will welcome having three meals provided daily, weekly housekeeping, laundry service and assistance with daily self-care activities like bathing and dressing.

Residents enjoy a variety of opportunities for social, recreational, and educational enrichment. Plus, residents benefit from all community amenities and conveniences, including our Health Suite, which offers a range of health-related services that enhances their well-being.



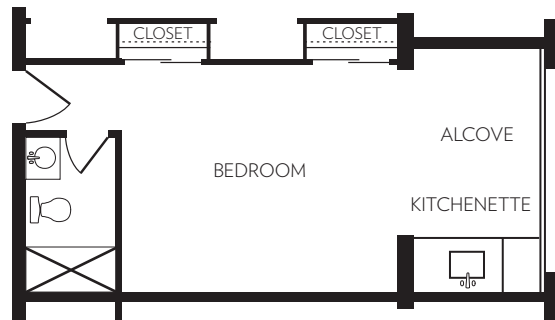
## WILLOWDALE

225 square feet\*



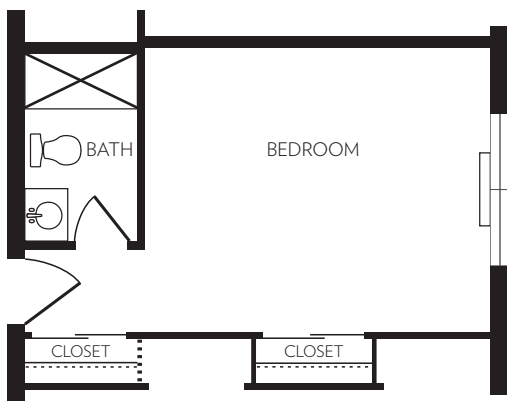
## DEVONSHIRE

375 square feet\*



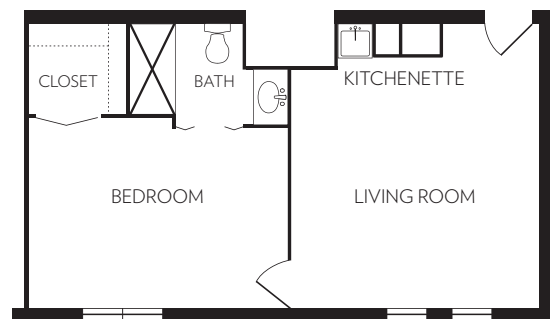
## AVONDALE

275 square feet\*



## WESTTOWN

450 square feet\*



## WASHINGTON

550 square feet\*



\*Square footage is approximate.

## ACCOMMODATION FEATURES

- Variety of floorplans, all including an en suite full bathroom
- Three chef-prepared nutritious meals, plus daily snacks
- Housekeeping, personal laundry and linen service
- Personal emergency response system
- All utilities, including cable television and wireless internet
- Use of all community common spaces and amenities

## SERVICES INCLUDED

- 24-hour nursing support by licensed and/or certified staff
- Support plan developed and monitored based on needs and requests
- Tailored memory support/dementia care and programming
- Expansive enrichment, recreational, educational, social, spiritual and wellness programming
- Supportive services, resident advocacy, family support and referrals
- Access to on-site physical, respiratory, occupational and speech therapy
- Access to on-site audiology, dental, podiatry, dermatology, laboratory, psychiatry, psychology, vision and x-ray services
- Assistance with scheduling appointments and transportation services
- Access to moving resources program, services and support

## PRICING

Lakeview Personal Care at Tel Hai pricing varies according to the accommodation, number of occupants and level of personal care required. A completed application is accompanied by a \$250 non-refundable application fee. A \$3,250 community fee is payable when an accommodation is reserved. The pricing below is reflective of single occupancy. For double-occupancy rates, speak to an Admissions Coordinator.

Accommodation	Approx. Size (sq. ft.)	Supportive Care Level 1 Monthly Rate
Willowdale	225	\$5,535
Avondale	275	\$6,326
Devonshire	375	\$7,360
Westtown	450	\$7,695
Washington	550	\$8,455

## SUPPORTIVE CARE FOR LIVING

For each resident, a personalized assessment prior to move-in and periodically throughout their stay will determine the level of personal care necessary to ensure a safe and comfortable experience for the resident.

- Supportive Care Level 2 - add **\$15** per day
- Supportive Care Level 3 - add **\$23** per day
- Supportive Care Level 4 - add **\$31** per day

Effective January 10, 2022



## SHORT TERM RESPITE CARE

Lakeview Personal Care at Tel Hai provides 7- to 30-day short-term respite stays for individuals requiring additional supportive care. Short-term respite stays include a private accommodation with en suite bath and all the features and services provided within Lakeview Personal Care at Tel Hai. The daily fee for a short-term respite stay is \$193.

If you are the caregiver for your loved one or you're currently utilizing home care services, a respite stay provides the caregiver much-needed break, while the individual receives care in a supportive and safe environment. Additionally, short-term respite stays are ideal for individuals who experienced short-term rehabilitation services but still require care.

## APPLY FOR RESIDENCY

Contact us today at **(610) 273-9333 ext. 2446** to meet with an Admissions Coordinator to learn more about Lakeview Personal Care at Tel Hai. Together, we'll discuss the services, programs and available accommodations. Visit [www.telhai.org](http://www.telhai.org) to download an application. Located in the countryside of Chester County in southeastern Pennsylvania, our Life Plan Community offers outstanding amenities, distinctive services, inviting residences, and exceptional care.