



Features, Services & Pricing

Lakeview Personal Care at Tel Hai offers 24-hour, resident-centered nursing support in an inviting personal care environment by a compassionate team of expert health care professionals. A variety of programming and stimulating activities provide residents with the comfort and care they desire in an intimate setting.

Accommodations include a variety of residences that range in size from a small private room with bath to a spacious suite. Couples or individuals seeking a secure and worry-free lifestyle will welcome having three meals provided daily, weekly housekeeping, laundry service and assistance with activities of daily living.

Residents enjoy a variety of opportunities for social, recreational, and educational enrichment. Plus, residents benefit from all community amenities and conveniences, including our Health Suite, which offers a range of health-related services that enhances their well-being.



SHORT-TERM RESPITE CARE

Lakeview Personal Care at Tel Hai provides 7- to 30-day short-term respite stays for individuals requiring additional supportive care. If you are the caregiver for your loved one or you're currently utilizing home care services, a respite stay provides the caregiver much-needed relief for a vacation or break, while the individual receives care in a supportive and safe environment.

Additionally, short-term respite stays are ideal for individuals who experienced short-term rehabilitation services but still require care. Respite care can be a stepping-stone where individuals continue therapy services with the eventual goal of returning home.

Individuals may visit Tel Hai for multiple respite stays throughout the year. Others choose to stay after their respite stay is over. Respite stays often provide an excellent segue into residing long-term at Lakeview Personal Care at Tel Hai.

Short-term respite stays include a private accommodation with en suite bath and all the features and services provided within Lakeview Personal Care at Tel Hai. The daily fee for a short-term respite stay is \$169.

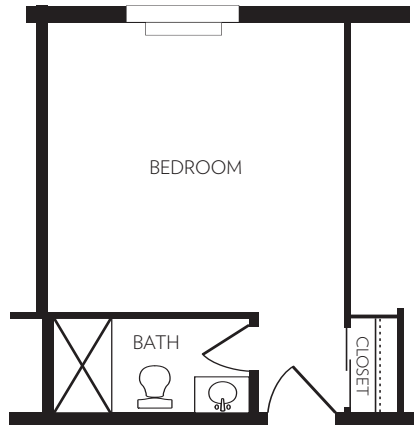
Maple View Memory Care at Tel Hai

Maple View Memory Care at Tel Hai, located within Lakeview, offers 24-hour, resident-centered nursing support in a secure memory-support neighborhood. Specifically designed for residents with moderate memory loss to progressive dementia, residents have a personal care accommodation that has open access to Adult Day Services at Tel Hai.

The intimate neighborhood features calming spaces including a virtual window, reception desk, and quiet room, complete with relaxing chairs and a soothing fish tank. Led by dementia-trained professionals, stimulating and structured programming provides residents independence and stimulation in a secure environment.

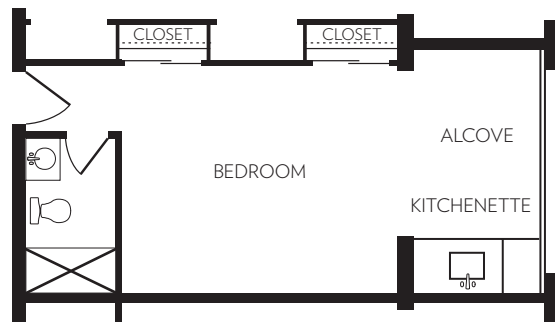
WILLOWDALE

225 square feet*



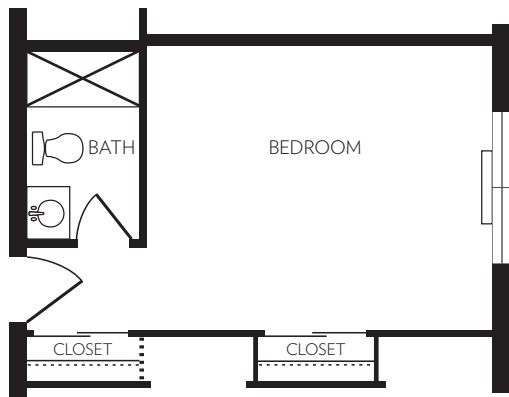
DEVONSHIRE

375 square feet*



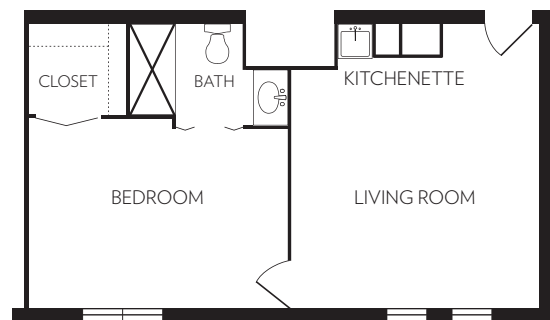
AVONDALE

275 square feet*



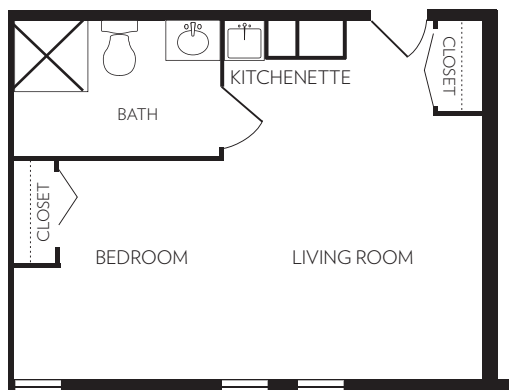
WESTTOWN

450 square feet*



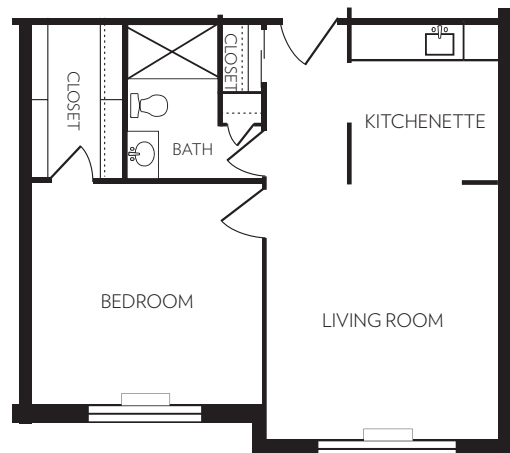
BRANDYWINE

340 square feet*



WASHINGTON

550 square feet*



*Square footage is approximate.

ACCOMMODATION FEATURES

- ▶ Private suites and one-bedroom accommodations with en suite full bathroom
- ▶ Three chef-prepared nutritious meals, plus daily snacks
- ▶ Housekeeping, personal laundry and linen service
- ▶ Personal emergency response system
- ▶ All utilities, including cable television and wireless internet
- ▶ Use of all community common spaces and amenities

SERVICES INCLUDED

- ▶ 24-hour nursing support by licensed staff
- ▶ Support plan developed and monitored based on needs and requests
- ▶ Tailored memory support/dementia care and programming (Maple View Memory Care at Tel Hai)
- ▶ Expansive enrichment, recreational, educational, social, spiritual and wellness programming
- ▶ Supportive services, resident advocacy, family support and referrals
- ▶ Access to on-site physical, respiratory, occupational and speech therapy
- ▶ Access to on-site audiology, dental, podiatry, dermatology, laboratory, psychiatry, psychology, vision and x-ray services
- ▶ Assistance with scheduling appointments and transportation services
- ▶ Moving resources program

PRICING

Lakeview Personal Care at Tel Hai and Maple View Memory Care at Tel Hai pricing varies according to the accommodation, number of occupants and level of personal care required. A completed application is accompanied by a \$250 non-refundable application fee. A \$3,000 community fee is payable when an accommodation is reserved. The pricing below is reflective of single occupancy. For double-occupancy rates, speak to an Admissions Coordinator.

Accommodation	Approx. Size (sq. ft.)	Supportive Care Level 1 Daily Rate
Willowdale	225	\$161
Avondale	275	\$185
Brandywine	340	\$213
Devonshire	375	\$215
Westtown	450	\$225
Washington	550	\$247

SUPPORTIVE CARE FOR LIVING

For each resident, a personalized assessment prior to move-in and periodically throughout their stay will determine the level of personal care necessary to ensure a safe and comfortable experience for the resident.

- ▶ Supportive Care Level 2 - add \$13 per day
- ▶ Supportive Care Level 3 - add \$21 per day
- ▶ Supportive Care Level 4 - add \$29 per day

Effective July 1, 2018

APPLY FOR RESIDENCY

Contact us today at (610) 273-9333 ext. 2446 to meet with an Admissions Coordinator to learn more about Lakeview Personal Care at Tel Hai or Maple View Memory Care at Tel Hai. Together, we'll discuss the services, programs and available accommodations. Visit www.telhai.org to download an application. Located in the countryside of Chester County in southeastern Pennsylvania, our Life Plan Community offers outstanding amenities, distinctive services, inviting residences, and exceptional care.



Adult Day Services at Tel Hai

Features, Services & Pricing



Adult Day Services at Tel Hai offers personalized, quality care for adults challenged by physical disabilities or requiring memory support/dementia care, who require daily supervision. Available to residents of Tel Hai and the greater community, our day program provides stimulating and structured programming while clients maintain their level of independence in a secure environment.

Tel Hai's Adult Day Services program is licensed by the Pennsylvania Department of Aging and funded in part by the Chester County Department of Aging Services.

SERVICES INCLUDED

- ▶ Support with activities of daily living
- ▶ Tailored memory support/dementia care
- ▶ Three chef-prepared nutritious meals, plus daily snacks
- ▶ Dynamic activities such as cooking, gardening, arts and crafts
- ▶ Stimulating therapeutic games, trivia and reminiscence exercises
- ▶ Expansive educational, social, intergenerational and spiritual programming
- ▶ Enjoyable wellness activities, including staff-led classes and supervised walks
- ▶ Community outings and bus excursions
- ▶ Pet visitation and therapy
- ▶ Scheduled programming in common spaces and amenities
- ▶ Secure environment with emergency response system

ADDITIONAL FEE

- ▶ Access to on-site physical, respiratory, occupational and speech therapy
- ▶ Access to on-site audiology, dental, podiatry, dermatology, laboratory, psychiatry, psychology, vision and x-ray services
- ▶ Access to on-site hair and beauty salon

PRICING

Program Days	Scheduled Hours	Daily Rate
Monday - Friday	6:30 am to 5 pm	\$93.00
Monday - Friday	6:30 am to 7 pm	\$106.00
Saturday and Sunday	6:30 am to 7 pm	\$113.00
Weekday ½ day	4 hours or less	\$56.50
Weekend ½ day	4 hours or less	\$75.00
Spa Bath		\$25.25

Effective July 1, 2018

APPLY FOR SERVICES

Contact us today at (610) 273-4619 to meet with the Director of Adult Day Services to learn more about Adult Day Services at Tel Hai. Together, we'll discuss the services, programming, and the application process. Visit www.telhai.org to download an application and remit with a one-time, refundable \$250 security deposit. Located in the countryside of Chester County in southeastern Pennsylvania, our Life Plan Community offers outstanding amenities, distinctive services, and exceptional care. Transportation to Adult Day Services at Tel Hai is provided by Rover for participants living in Chester County.

